



10 Norton Avenue
, Chesterfield, S40 3NG
Guide Price £300,000

 2  1  2  D

10 Norton Avenue

, Chesterfield, S40 3NG

£300,000 - £350,000 (Guide price) Set back from the road in a generous plot, located at the head of a quiet cul-de-sac in the highly desirable suburb of Somersall, close to local amenities, similar properties and transport links, is this attractive, practical and beautifully presented 2 bedroom detached bungalow.

Offering 710 sqft of accommodation, the property features a modern shaker kitchen, a stylish bathroom, lounge with gas fire and adjoining open plan dining room, plus 2 good sized double bedrooms.

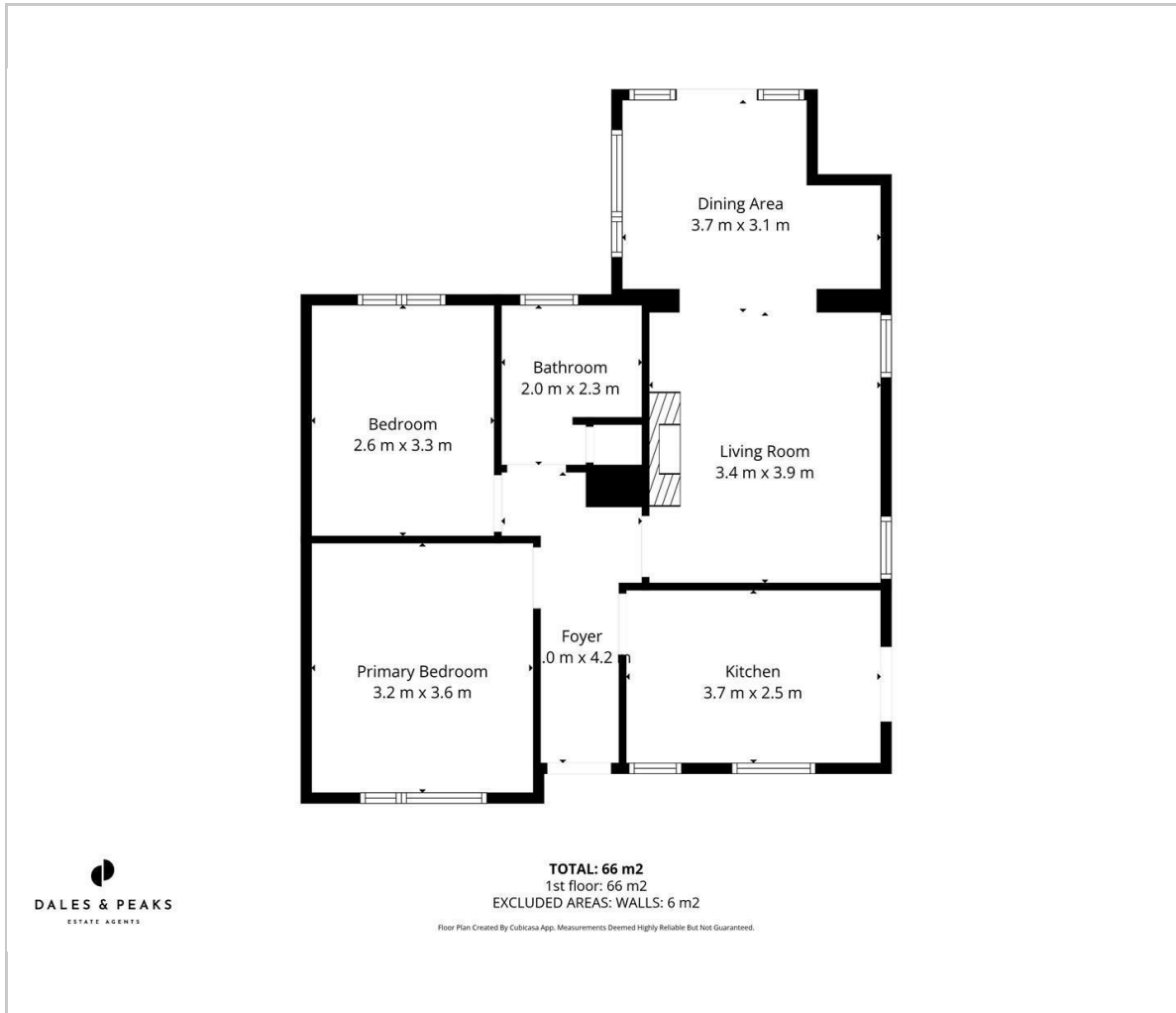
Externally, the property sits in a generous, but flat and manageable plot with ample parking to the front and a lawned garden to the rear with a large patio.

**Dales & Peaks ForwardMove
please read**





Floor Plan

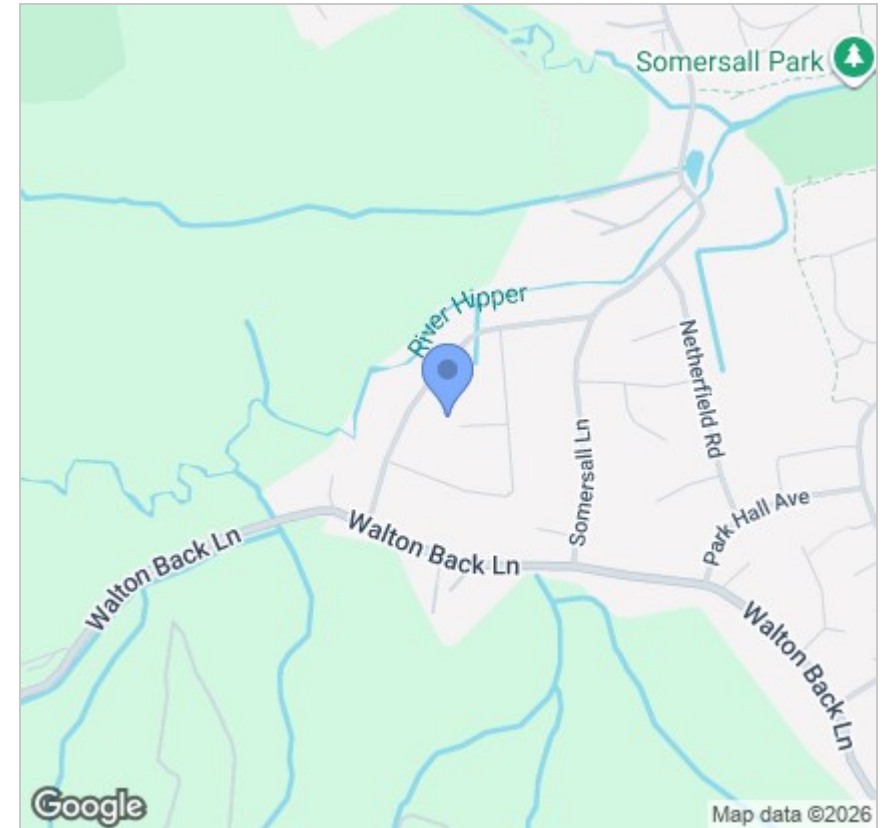


Viewing

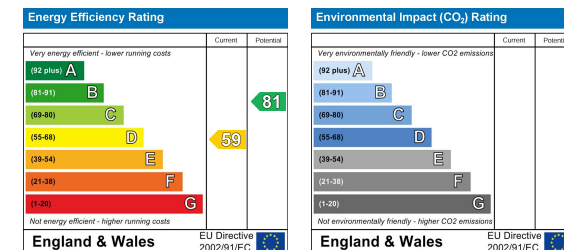
Please contact our Chesterfield Office on 01246 567540 if you wish to arrange a viewing appointment for this property or require further information.

These particulars, whilst believed to be accurate are set out as a general outline only for guidance and do not constitute any part of an offer or contract. Intending purchasers should not rely on them as statements of representation of fact, but must satisfy themselves by inspection or otherwise as to their accuracy. No person in this firm's employment has the authority to make or give any representation or warranty in respect of the property.

Area Map



Energy Efficiency Graph



131 Chatsworth Road, Chesterfield, Derbyshire, S40 2AP
 T: 01246 567540



E: info@dalesandpeaks.co.uk
 www.dalesandpeaks.co.uk